



**MILESTONE**  
H E L P I N G  
P A T I E N T S

# LOOX

EYE-CONTROL FOR MACROPATH

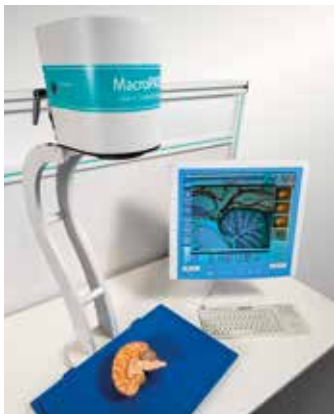
## The Challenge

Pathology labs, and in particular the gross specimens examination areas, are environments where there is a high risk of contamination and people's hands are occupied mainly with surgical instruments.

The Milestone efforts bring a new innovative and ergonomic method for the control of macro digital imaging instruments: **LOOX eye-control system** is engineered for enhancing comfort while carrying out **hands-free gross specimens documentation** during pathological dissection.

## The Perfect Match: **MacroPATH** + **LOOX**

EYE-CONTROL FOR MACROPATH



+



*Open your eyes to a whole new way of interactivity*

## Eye Tracking Benefits in Gross Specimens Examination

- » **Safety:** preventing contamination
- » **Improved Productivity:** hands-free interactions offer maximum user experience
- » **Flexibility:** possibility of using glasses, contact lenses and face shields
- » **Display Enhancements:** better overlay accuracy and vary-focal displays
- » **Gaze Sharing & Analytics:** ideal tool for learning, remote assistance or analytical studies

# Technical Specs

<b>Size</b>	17 x 15 x 335 mm (0.66 x 0.6 x 13.1 in)
<b>Max Screen Size</b>	27 inches with 16:9 Aspect Ratio (30 inches with 21:9 Aspect Ratio)
<b>Operating Distance</b>	20 – 37" / 50 – 95 cm
<b>Connectivity</b>	80 cm
<b>USB Cable Length</b>	80 cm
<b>Head Tracking</b>	Yes (not powered by EyeChip)
<b>CPU Load</b>	Averagely 5% (Core i7, 9th Gen)
<b>Power Consumption</b>	2.0 Watt
<b>USB Data Transfer Rate</b>	100KB/s
<b>Illuminators</b>	Near Infrared (NIR 850nm) Only
<b>Frequency</b>	90 Hz
<b>Tracking Population</b>	97%
<b>System Recommendations</b>	2.0 GHz, Intel i5 or i7, 8 GB RAM

*Patent Pending*

## Simple to Use

**1 Connect the tracker**

**2 Get your calibration**

**3 Go into action**

Warranty, safety and compliance papers

Eye Tracker with USB 2.0 cable

Eye Tracker Box



Two mounting brackets for installation (one spare)

USB Extension Cable (1 Meter)

Installation guide: how to mount your eye tracker to a laptop or monitor

### Headquarters

MILESTONE Srl  
Via Fatebenefratelli, 1/5  
24010 Sorisole (BG) - Italy  
Tel: +39 035 4128264  
Fax: +39 035 575498  
email: [marketing@milestonemed.com](mailto:marketing@milestonemed.com)

### US Headquarters

MILESTONE MEDICAL TECHNOLOGIES, INC.  
6475 Technology Avenue, Suite F  
Kalamazoo, MI 49009 - USA  
Tel: 269-488-4950 - Toll-free: 866-995-5300  
Fax: 269-488-4949  
email: [info@milestonemed.com](mailto:info@milestonemed.com)

[www.milestonemed.com](http://www.milestonemed.com)