



MILESTONE
H E L P I N G
P A T I E N T S



LOGOS J

The right tool for the lean lab

The first “personal” hybrid tissue processor
Quality. Speed. Flexibility. Automation.



**The processor that did not exist.
But was needed.
Milestone has matched the unarticulated
needs of users with technological
possibilities that open new doors.**



LOGOS J as...

**The LOGOS J is the result
of a philosophy that sets
a new standard in the field
of tissue processing.**

... a dedicated rapid tissue processor for stat, urgent or transplant biopsies, for results within 50-60 minutes.

... a rapid, flexible, tissue processor for biopsies (up to 3mm) to level-out the work load in the lab.

... an optimized conventional resistance heated processor for HER-2, ER, PgR according to ASCO and CAP guidelines.

... a dedicated, optimized rapid tissue processor for specific specimens: prostate, skin, gastric, ...

... a fully automated bone marrow processor for turn around time in less than 24 hours.

... your application



The challenge: improving the workflow of the laboratory.

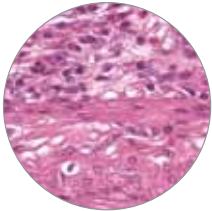
In today's histology labs, the workload consists approximately of 35-50% small biopsies (below 3 mm) and 40-50% surgical specimens. Transplant, stat and urgent biopsies that require a rapid turnaround time are a minority of the total workload. This small number of biopsies interferes with the routine workflow of the laboratory. Large capacity conventional tissue processors do not fulfill the requirements for the speed and flexibility needed to effectively improve the workflow of a laboratory or address these specific workflow streams.

The LOGOS J: Milestone meets the challenge.

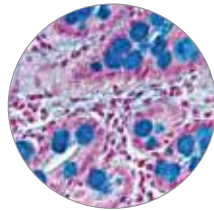
There are times in the gradual evolution of a technology that a leap forward occurs that is of such magnitude and significance that it is completely unforeseen as being within the realm of capability. This is what LOGOS J represents.

✓ Unmatched quality

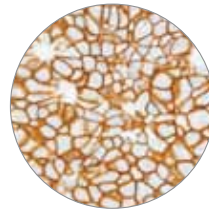
LOGOS J processes biopsies with specific optimized protocols to consistently assure the highest standard of quality.



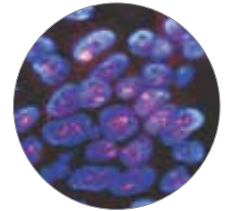
Colonic biopsy, microwave processed H&E (x 400)



Bowel biopsy, microwave processed. Alcian blue microwave staining (x 400)



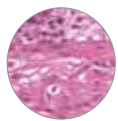
Breast cells HER2 amplification detection by IHC. Hematoxylin counterstain (x 400)



Breast cells HER2 amplification detection by FISH processed by microwaves (x 800).

✓ Unmatched processing times

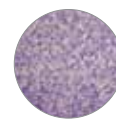
Faster than conventional processing



Transplant
50 minutes including fixation



1 mm
65 minutes including fixation



3 mm
3 hours 10 minutes including fixation

✓ Unmatched processing flexibility

From 1 up to 42 cassettes



The LOGOS J rack consists of 3 segments of 14 cassettes each to allow the flexibility to fit any workload requirements.

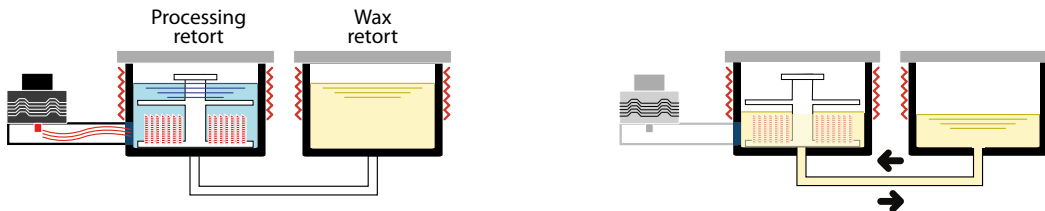
LOGOS J . The right tool for the “lean” lab.

Implementation of the “lean” lab requires optimized dedicated instrumentation. The LOGOS J fulfills this requirement and addresses the unmet need for a benchtop, compact, flexible load, rapid tissue processor. This new tool incorporates an innovative solution to solve workflow problems in histology laboratories.



Day Operation (1). Urgent specimens.

As a fully automated, single retort, **rapid hybrid tissue processor**

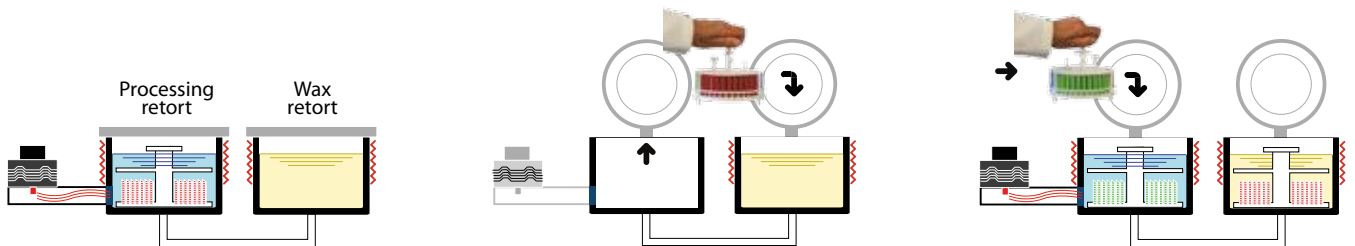


During the day the histotech will start dedicated single batch runs with short cleaning cycles. LOGOS J will run urgent biopsies with hybrid microwave technology as a fully automated unit. Molten wax will be transferred automatically to and from the processing retort for impregnation.



Day Operation (2). Higher throughput.

As a sequential, dual retort, **simultaneous batch hybrid tissue processor**

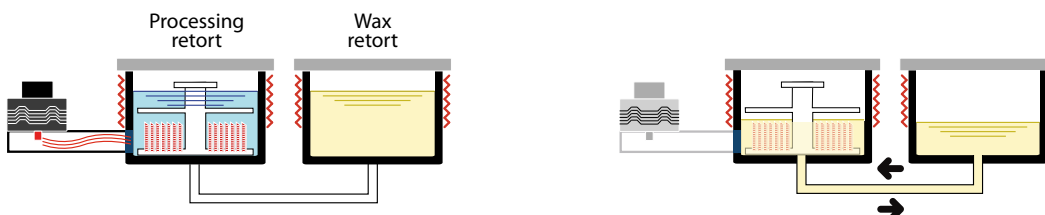


- 1 The first rack is processed in the fixation/dehydration/clearing processing retort
- 2 At the end of the cycle, the rack is manually transferred to the wax retort
- 3 A new rack is placed in the processing retort. The two racks are simultaneously processed.



Night Operation.

Fully automated, bone marrow processor for a diagnosis in less than 24 hours



During the night, or if required during the day, LOGOS J will process bone marrow specimens through the fixation, decalcification, dehydration clearing and impregnation steps in a fully automated mode. The specimens will be ready for cutting, embedding and staining to allow rapid diagnosis in less than 24-hour.

LOGOS J. Software like never before.

We could not make it more intuitive.



Intuitive touch display.



- 1 Enter the appropriate user level. The administrator can modify programs or store new ones. The operator can recall and run existing processing protocols.



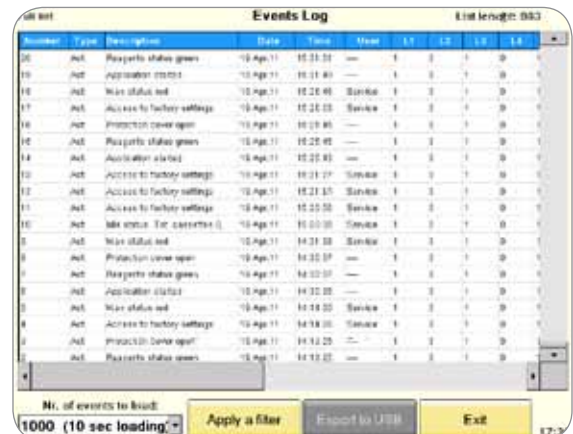
- 2 Icon-driven. User friendly.



- 3 Administrator can easily setup a new protocol by selecting through the multiple choices available for each step.



- 4 The complete summary of the new protocol is displayed for approval or modification before starting the process.



- 5 An events log lists all activities carried out with the unit for documentation, service and quality assurance purposes.

LOGOS J. Green, safe and economical. Packed with the latest technology for an improved work environment.



Up to 10 quick disconnect 2.5 l reagent tanks

Heated, PTFE coated, internal surface to avoid condensation of reagents for consistent processing. Enhanced operator safety by elimination of vapors

Touch-screen, icon-driven control terminal

Microwave retort

Wax retort

Easy, safe transfer of exhausted wax through heated PTFE connector



**Open system.
No proprietary reagents commitments.
Use of histology grade wax.**

Milestone world market leadership

- ✓ Largest installed base of microwave tissue processors
- ✓ Over 1,600 units in operation worldwide
- ✓ The "de facto" standard in rapid processing
- ✓ Lowest cost of ownership
- ✓ The highest quality of application and service support



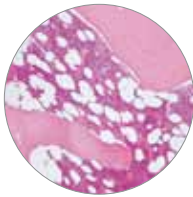
Fully automated bone marrow processing for a diagnosis in less than 24-hours.



Hours, not days!



For the first time fully automated fixation (formalin), decalcification (formic acid, EDTA), dehydration, clearing and impregnation of bone marrow samples can be carried out in less than 24 hours.



Bone marrow, EDTA, H&E x 100



Total processing time (fixation to impregnation) for bone marrow specimens of 1.8 mm diameter (11 gauge)

Decalcifier	Temperature	Time
Formic acid 10%	37°C	4h 5'
Formic acid 10%	50°C	3h 10'
EDTA 10%	37°C	20h
EDTA 10%	50°C	5h 30'

MILESTONE



HELPING PATIENTS

MILESTONE Srl - Via Fatebenefratelli, 1/5 - 24010 Sorisole (BG) - Italy
 Tel: +39 035 4128264 - Fax: +39 035 575498
 www.milestonemedsrl.com - email: medical@milestonesrl.com

UNI EN ISO 9001: 2008 / UNI EN ISO 13485:2004 CERTIFIED

MILESTONE MEDICAL TECHNOLOGIES, INC.
 6475 Technology Avenue, Suite F, Kalamazoo, MI 49009 - USA
 Tel: 269-488-4950 - Toll-free: 866-995-5300 - Fax: 269-488-4949
 www.milestonemed.com - email: info@milestonemed.com

In your country: