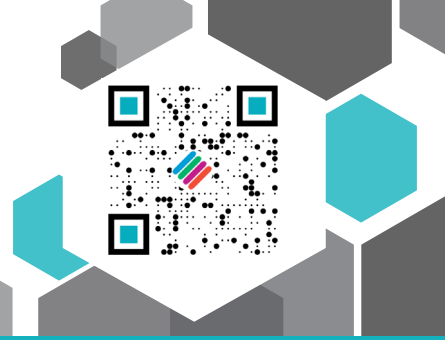




**MILESTONE**  
H E L P I N G  
P A T I E N T S



# MileWATCH

**24/7 Laboratory  
Tracking & Monitoring**



## 24/7 Tracking & Monitoring

# MileWATCH

MileWATCH is a multi-faceted system which can be used to standardize and optimize your laboratory workflow. Used for tracking and monitoring, MileWATCH tracks specimens from the time they are first scanned in at the time of collection in the OR, through their journey in the Anatomical Pathology laboratory. MileWATCH captures protocol details, specimen progress, and status for a comprehensive chain of custody. In addition, MileWATCH is a 24/7 remote monitoring system that allows Milestone units to be continuously connected, monitored, and controlled day and night, while real-time alerts keep operators informed of any issues or changes. Integrate MileWATCH into your existing LIS and use it as a workflow management system which can identify bottlenecks within the laboratory and help optimize the efficiency of tissue processing, resulting in optimized workflows and increased productivity.



**SPECIMEN**  
TRACEABILITY



**MONITORING**  
& NOTIFICATIONS



**WORKFLOW**  
MANAGEMENT

## KEY BENEFITS

### SPECIMEN CHAIN-OF-CUSTODY

- Traceability from the OR through AP
- Complete visibility of specimen journey
- Secure storage of crucial information

### REMOTE MONITORING

- Oversee daily operations from one computer
- Monitor each unit throughout the day and night
- Remotely access all logs for connected instruments

### INSTANT NOTIFICATIONS

- Choose your preferred method
- Email, voice calls, text or WhatsApp messages
- Customizable notification types and recipients

### WORKFLOW OPTIMIZATION

- Identify bottlenecks to improve planning
- See cassettes in all stages of their journey
- Use data to improve future processes

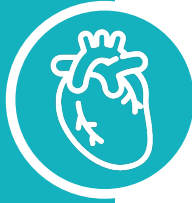
### SPECIMEN CASE SEARCH

- View specimen history across all units
- Includes valuable data for the case report
- Provides complete specimen documentation

### INTEGRATION WITH LIS

- Interfaced through your local LAN
- Easily retrieve stored information by case ID
- Single integration, no matter how many systems

# COMPLETE DOCUMENTATION AT EVERY STEP



## Specimen Collection

MileWATCH collects all details, including: Case ID, formalin ratio, specimen weight, bucket/bag ID, and time in formalin

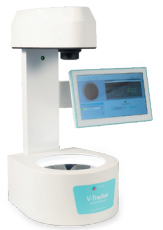
**Compatible units: UltraSAFE, SealSAFE, TissueSAFE**



## Specimen Accessioning

MileWATCH collects any additional details off the specimen container, including: barcodes, QR codes, notes, and images

**Compatible units: V-Tracker**



## Grossing

MileWATCH collects digital documentation through the use of MacroPATH, including: images, videos, and audio notes

**Compatible units: MacroPATH**



## Cassette Scanning

MileWATCH collects the cassette codes through automatic scanning which also detects any missing, duplicate, or mismatched codes

**Compatible units: T-Tracker, R-Tracker**



## Tissue Processing

MileWATCH collects all process details, including: reagents used, user details, protocols, unit serial number, and time

**Compatible units: MAGNUS, EVO**



# UNIQUE FEATURES

## INSTANT NOTIFICATIONS

MileWATCH can be set up to send emails, voice calls, texts, or WhatsApp messages to the recipients of your choice, providing all necessary information for prompt action to ensure error-free operation. Notification type and recipients can be customized based on your lab's specific needs. MileWATCH notifications are customizable and include key steps and issues such as process started, process completed, operator action required, and any unit alarms and alerts that occur.



## WORKFLOW OPTIMIZATION

The MileWATCH software allows you to view and control specimens in real time. Using the software, the lab manager can monitor the number of cassettes to be processed, which cassettes are being processed at any given time, and how many cassettes have already been processed. These comprehensive features empower lab managers to identify potential bottlenecks and improve planning for future processing runs, maximizing workflow efficiency and reducing specimen turnaround time.

## LIS INTEGRATION

MileWATCH collects and stores data and information in the system database and can be interfaced with your existing LIS through the local LAN. Even if multiple Milestone systems are connected, MileWATCH only requires a single integration to connect all units. Once the LIS integration is complete, sorting by the specific case ID, any related case information can be easily retrieved.



**SEE MILEWATCH IN ACTION**



## US Headquarters

MILESTONE MEDICAL TECHNOLOGIES, INC.

6475 Technology Avenue, Suite F - Kalamazoo, MI 49009

Tel: 269-488-4950 - Toll-free: 866-995-5300 - Fax: 269-488-4949

email: [info@milestonemed.com](mailto:info@milestonemed.com) - [www.milestonemed.com](http://www.milestonemed.com)